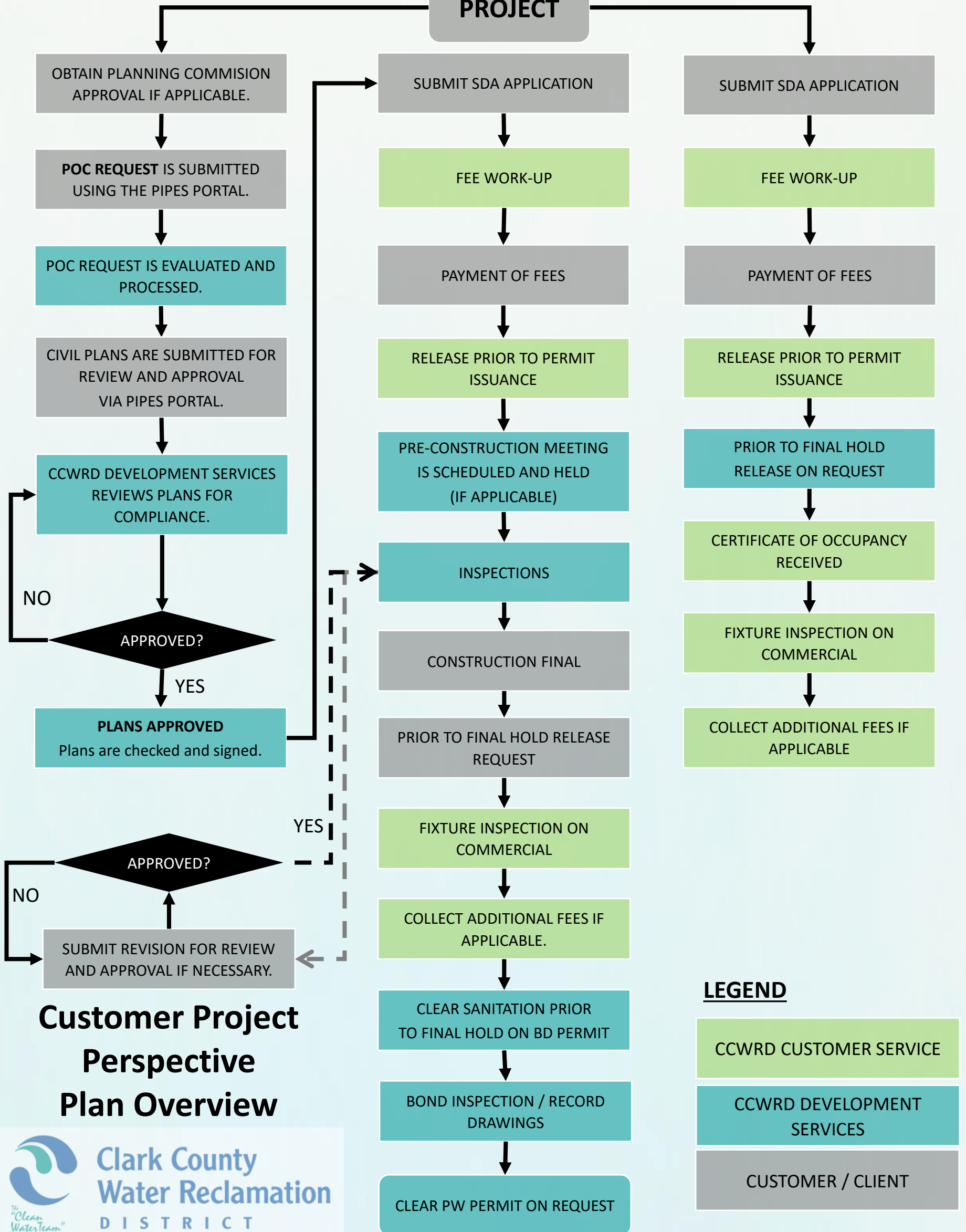


GENERAL DEVELOPMENT

PROJECT

TENANT IMPROVEMENT



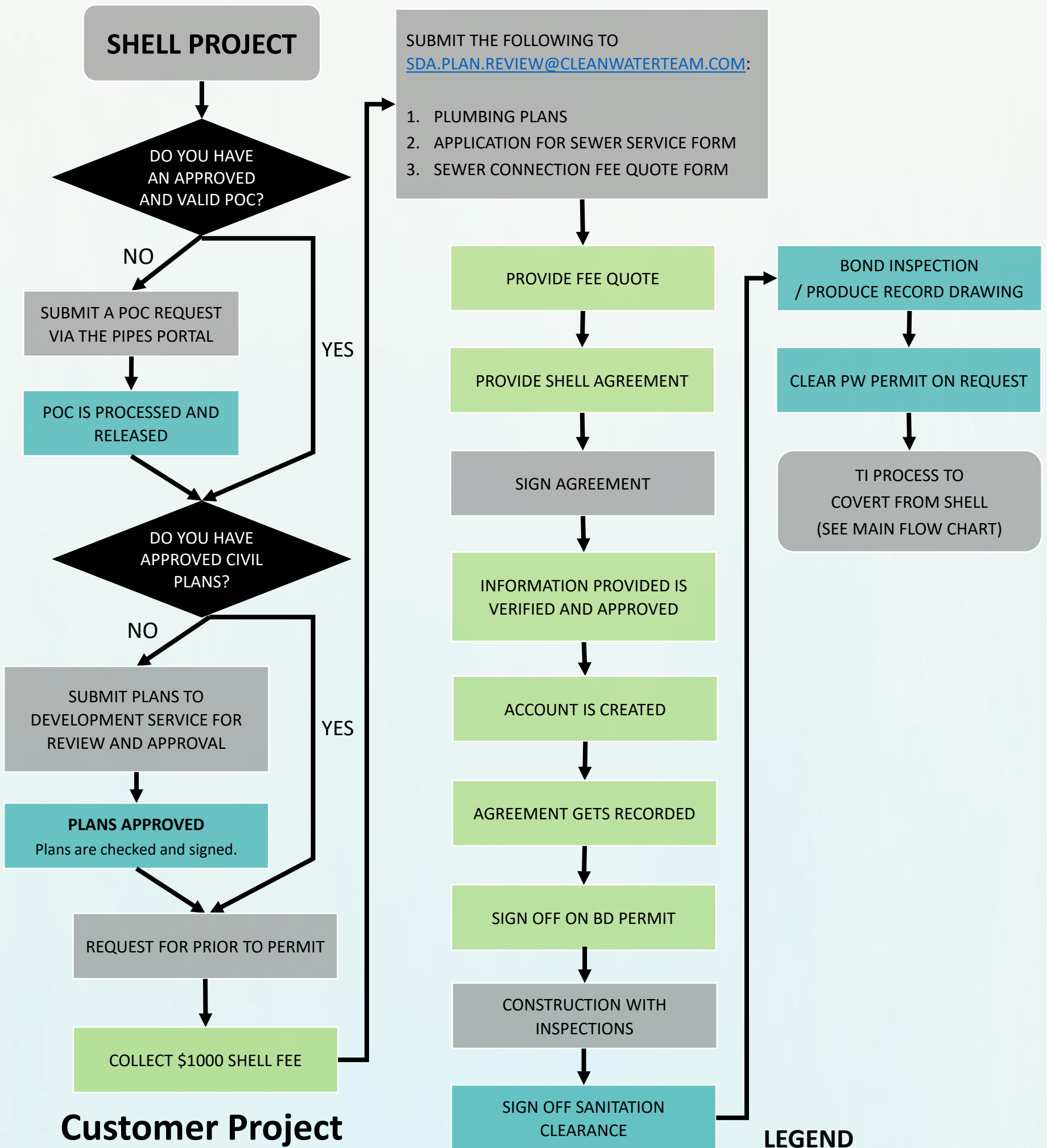
Customer Project Perspective Plan Overview



LEGEND

- CCWRD CUSTOMER SERVICE
- CCWRD DEVELOPMENT SERVICES
- CUSTOMER / CLIENT

SHELL PROJECT



Customer Project Perspective Shell Process

LEGEND

CCWRD CUSTOMER SERVICE

CCWRD DEVELOPMENT SERVICES

CUSTOMER / CLIENT

DEVELOPMENT GUIDELINES

This guide outlines the requirements for obtaining the necessary approvals for sewer service application. Please visit our website <https://www.cleanwaterteam.com/> for more information.

DEVELOPMENT SERVICES

To ensure quality and uniformity, developers and owners need to work with the following two teams in the Development Services Group:

- Nevada Professional Engineers (PE) will be working with the Development Services Plan Review team when submitting their Civil Plans for review.
- Class A contractors will be working with the Development Services Inspections team after Civil Plans are approved and construction is ready to begin.

Developers or owners must have a Nevada Professional Engineer (PE) submit Civil Improvement Plans to the Development Services Plan Review team for review and approval using the PIPES Portal if their project:

- is proposing to tie into, contribute flow to, or modify Clark County Water Reclamation District (CCWRD) sewer infrastructure.
- has an "Offsite" PW Permit, issued by Clark County Public Works.
- has a "Commercial Building New" BD Permit, issued by the Clark County Building Department.

If you have any questions, please call Development Services at 702-668-8160 or send an email to DevelopmentServices@cleanwaterteam.com.

PLAN REVIEW STEPS

- Step 1: Pipes Portal Registration
- Step 2: Point of Connection
- Step 3: Submittals
- Step 4: Approvals
- Step 5: Revisions

During the plan review process, the [PIPES Portal](#) is used to request point of connections and to submit, retrieve, and check status of plan reviews. To gain access, your company must be registered.

Note: All necessary additional paperwork must be completed prior to project final. e.g. Main Line Frontage Fee Paid, Oversize Agreement Processed, Easements and/or Final Maps Recorded, etc.

If your company is not currently registered send an email to DevelopmentServices@cleanwaterteam.com for more information.

Once your plans have been approved by Development Services, if you are required to have a grease interceptor or sand/oil interceptor, your next step is to get sign off from [Pretreatment](#).

Once Pretreatment has signed off on your plan, you will provide one set of your approved plans to [Customer Service](#) that includes plumbing so the SDA fee quote may be calculated.

POINT OF CONNECTIONS

All new civil plans must identify their point of connection (POC) when submitting civil improvement plans to District Development Services. This step will advance the civil plans review process, ensure capacity in the public collection system, and present location alternatives for service connection.

INSPECTIONS

After Civil Plans are approved, developers, owners, and Class A contractors are required to contact the Clark County Water Reclamation District (CCWRD) Inspections team before sanitary sewer construction can begin. CCWRD inspections are required for all new public sewer being constructed by a Class A contractor and all materials used must be on the [Approved Materials List](#).

If you have any questions, please call Inspections at 702-668-8205 or send an email to inspection@cleanwaterteam.com.

APPLICATION FOR SEWER SERVICE

Customer Service is responsible for the issuance of SDAs (System Development Approvals) and collecting connection fees.

NEW CONSTRUCTION

New commercial and residential structures that connect to the public sewer must submit an application for sewer service in person or by mail.

Residential

Applications for Residential connections require the address to be serviced, the assessor's parcel number, lot and block (if applicable), and subdivision name (if applicable).

Commercial

Commercial structures are charged by the number of plumbing fixtures and type of business to be constructed within the structure. Architectural and plumbing plans must be submitted for review to the District's Customer Service Department. Food service plans, along with the kitchen equipment schedule and plumbing plans, must be submitted along with the architectural plans for businesses that will be serving food. If plans have been submitted to the Clark County Building Department, please provide the PAC number that was assigned to the project. Permit fees will be calculated and a permit issued. For more information, please contact Customer Service. The best way to reach our team is through email: customerservice@cleanwaterteam.com